



Gulliver's Valley Accessibility Guide



Access at Gulliver's

Here at Gulliver's we work closely with a member of the National Register of Access Consultants to continuously improve the accessibility of our parks, attractions and facilities for all of our visitors.

Staff training

Many of our team members have received disability awareness training which includes understanding of the Equality Act and disability etiquette.

Accessible Parking

A number of accessible car parking spaces are provided on tarmac near to the park entrance.

Accessible Toilets

A number of accessible toilets are located around the park and are indicated on our park maps.

Wheelchairs

Wheelchairs are available for hire from Guest Relations for a £20 returnable deposit fee.

These are limited in number and are available on a first come, first served basis.



Guide for guests with special needs

A handheld guide is available upon request for guests with special needs. This guide will help you to determine which rides and attractions are suitable for you and your family.

Please also see our comprehensive information for all attractions listed below.

This information sheet gives guests with special needs information regarding the accessibility of all rides on the park. If further information is required please speak to a member of staff in our Guest Relations office.

Accompanying carers are responsible for assessing the suitability of rides for those in their care. Our staff are not trained to determine the suitability of rides for individual capabilities. We will assume that if you allow a person in your

care to use a ride (accompanied or otherwise) they are safely capable of doing so.

Please Note: We strongly advise that all guests with special needs are accompanied whenever possible on every ride

Guests diagnosed with conditions that present queuing difficulties

Ride Access Pass

Guests with particular additional needs who are unable to queue may be eligible for a ride pass. This would allow them and up to three accompanying helpers to access the ride via the ride exit area for ease of access.

In order to offer the most inclusive experience for all visitors, there are a limited number of Ride Access Passes available for each operational date.

A request for a ride Access Pass MUST be reserved online, in advance of your visit. [RESERVE HERE](#)

Ride Access Passes cannot be issued without advance reservation.

In addition to online reservation, you'll need to bring evidence of eligibility with you, which can be either of the following:

- A document issued by a medical professional indicating diagnosis or impact of diagnosed condition
- A Nimbus issued Access Card containing the 'standing and queuing' symbol or the 'crowds' symbol

If you do not bring one of the above documents, we'll be unable to provide you with a Ride Access Pass.

For the avoidance of doubt, blue badges, DLA and PIP letters are not accepted as evidence of eligibility for the Ride Access Pass.

For the most up to date information about the Ride Access Pass, please observe our website [Accessibility information](#) before you visit.

Accessible Changing Area

We have an enlarged changing area available on the Main Street for guests who require its use. This space offers a height adjustable bed along with an accessible toilet and wash basin. The facilities can be found to the left of the main entrance when entering the building.

Key:



Upper Body Control Required



Lower Body Control Required



Lost World

Gyrosaur:



An intense spinning pendulum ride. Sorry, currently no direct wheelchair access. Guests must traverse steps to the ride platform in order to ride



T-Rex Tower:



Sorry, currently no wheel chair access. A number of steps must be traversed to reach the top of the tower.



Lost World River Tour:



Wheelchair to exit and store. There is step free access to the ride station however guests must step into the boat.



Paragliders:



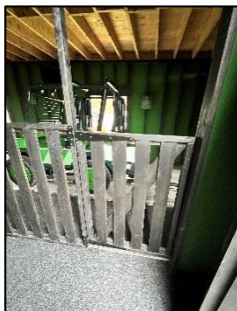
Wheelchair to entrance and store. Access to the ride chairs is flat.



Jurassic Jeeps:



Wheelchair to exit gate and store. There is a single step up into the ride cars.



Smugglers Wharf

Crocodile Creek Boats:



Wheelchair to exit and store. It can be difficult to transfer into the boats, life jackets must be worn and all riders must be able to swim. The boats are powered by hand.



Blackbeards Barrels:



Wheelchair to the entrance and store. A ramp is in place to access ride, there is then a single step into the barrel.

Pirate Ship:



Wheelchair to entrance and store: Ramp goes all way to the ride however there is a step into the ride itself.



Gully Town



Gully Town Carousel:



Wheelchair to exit and store. There is 1 step onto the ride. Riders shall need to be lifted or step onto a horse.

Melody Mayhem:



Wheelchair to the entrance and store. Will need to traverse 1 step onto the ride and climb or be lifted onto an instrument.

Drum seating requires only upper

body control



Tree Top Drop:



Wheelchair to entrance and store. Riders may need to be lifted into the seat.



Lilliput Lane

Monster Mansion Haunted House:

This is a walk through attraction with level flooring throughout however some areas have tight access.



Dragon's Lair



Dragon's Peak:



This is a series of strenuous vertical climbing walls requiring both upper and lower body strength.

Dragon's Lair Cave:



A tight walk-through caving attraction containing stairs and uneven flooring throughout.





Dragon's Lair Inflatable:



A large inflatable attraction that requires fully body control to navigate.

Toyland



Lilliput Carousel:



Wheelchair to entrance gate and store (Will need to traverse 1 step up through the entrance gate then a further 2-3 steps to access horses.) Carriage seating requires only upper

body control



Ferris Wheel:



Wheelchair to exit gate and store (Will need to traverse 2-3 steps into the gondola to ride.).



JCB Zone:



Access to the area is flat and there is one accessible digger available. The digger is accessed via a ramp and there is a separate set of controls for use by those in wheelchairs.



Frantic Fire Trucks:



Wheelchair to exit and store. Will need to traverse 2 steps into a standing 'cage' area – Riders must stand throughout



Jumbo Jetters:



Wheelchair to entrance and store. Will need to traverse 1-2 steps up into the elephant.



Rockin' Tug:



A ramp goes all way to the ride but wheelchairs are not allowed on the ride itself and must be folded and stored at the ride exit. 1-2 steps must be traversed to enter the ride gondola



The Wiggler:



Wheelchair access via the exit gate and store. There are several steps up to the ride station and into the carriage.

In the unlikely event of an evacuation, you may be required to walk down the lift hill access ramp or stay on the ride until it can be returned to the station.

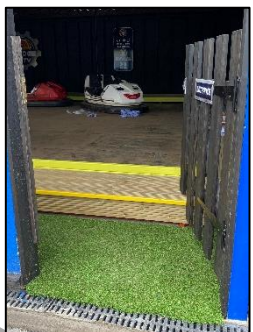


Gully's Gears

Grand Prix Racer:



Wheelchair access via the exit gate and store. There are a number of steps up to the ride station and into the carriage.



Dodge City Dodgems:



Wheelchair to the entrance gate and store outside the ride area. Approximately 1-2 steps will need to be traversed to enter the ride area and dodgem car.

Carfari:



Wheelchair to exit gate and store. There is a single step up into the ride cars.



Crazy Planes:



Wheelchair to exit and store. Will need to traverse a small step up and down into ride area, and 2 steps up to step into the plane.

Turbo Tower:



Wheelchair access via the exit gate and store. There is one step up to the ride platform and one up onto the gondola.



Western World



Tombstone Mine:



Wheelchair access via the front entrance and store. There is a step up into the carriage.

Rocky Ridge Railway:



Wheelchair to the exit and store. A ramp is available to the ride station however there is a single step into the carriage.





Prairie Ponies:



Wheelchair to entrance and store. (Will need to traverse 1 - 2 steps onto the pony)

Sioux City Express:



Wheelchair to the entrance gate and store. There are 1-2 steps into the carriage.



Apache Falls:



Wheelchair to exit and store. There is a step down into the boat.

In the unlikely event of an evacuation, you may be required to walk down the lift hill access ramp or stay on the ride until it can be returned to the station.

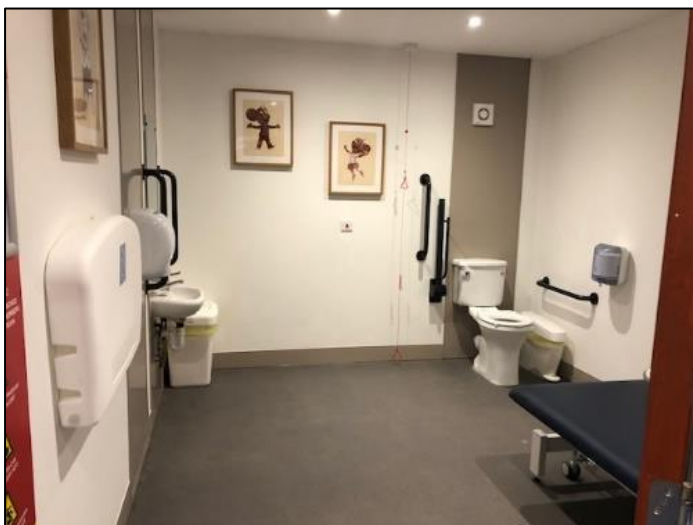
Accessible Toilets



Accessible toilets are in the following areas:

- Lilliput Lane
- Western World
- Lost World

The Accessible Changing Area facility in Lilliput Lane features an adjustable height bed.



Retail Outlets

(That are wheelchair accessible)



Gully's Gifts

Catering Outlets

(That are wheelchair accessible)



Curiosity Café



Texan Treats



Pizza Restaurant



Lilliput Theatre
From Inside



Lilliput Theatre
From Outside



Mrs P's Sweet Treats

Additional Information:

Please read this guide and check the safety information notices on every ride. If for any reason you cannot read, a suitably trained person should read the notices and this guide to you. Please Note: The decision to go on a ride is yours; our staff are not trained to assess a person's suitability (Beyond that of height). They can give advice based on any information you give, and the specific containment system of the ride.

Height Limit's:

Every ride has its own height limit this is set with the customer's safety in mind, these limits are not negotiable and will be strictly adhered to by all of our ride operators.

Company policies:

Our staff are not trained to lift guests into or out of rides.

Assistance dogs are welcome on site but for safety reasons, are not permitted on the rides. A member of your party must remain with your dog.

We want you to fully enjoy your day. If there is anything else that we may be able to do for you on the day of your visit please call into our Guest Relations office and ask.



We hope you enjoy your visit!



Don't forget to visit our website and follow Gully Mouse on Facebook and Twitter to be kept up to date on our special events and offers!